

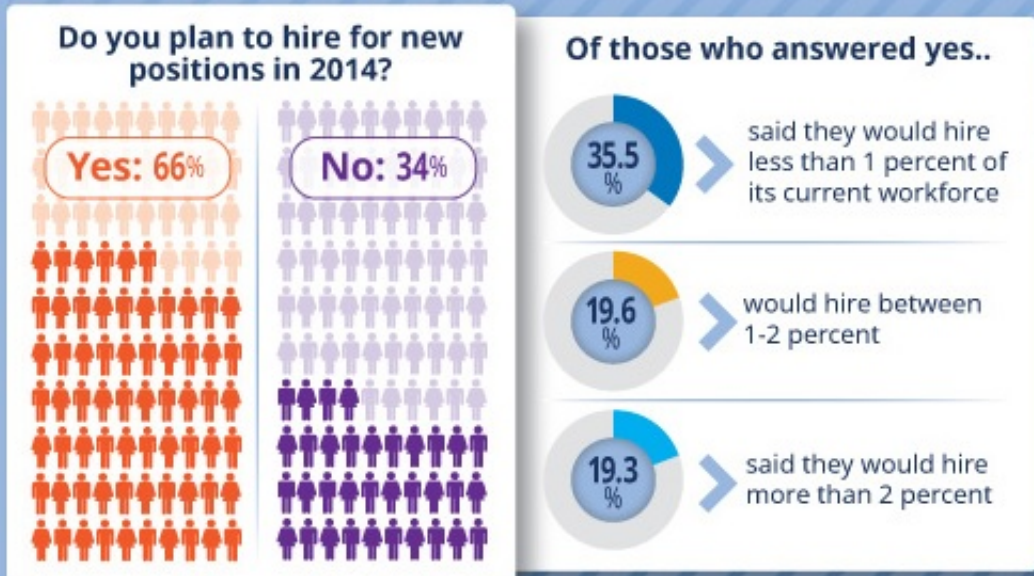
TENTH ANNUAL EMPLOYMENT OUTLOOK SURVEY

Is the Public Sector Hiring in 2014?

Last year state and local governments collectively added only 43,000 jobs across the nation, an increase of only 0.2 percent according to the U.S. Bureau of Labor Statistics. IPMA-HR surveys 363 of its members to find out whether employment in the public sector is expected to improve in 2014.



HIRING



LAYOFFS



EMPLOYMENT ACTIONS

Are there plans for any of the following actions in 2014?



With vacant jobs, do you plan to leave some unfulfilled for budgetary reasons?



IPMA-HR INTERNATIONAL PUBLIC MANAGEMENT ASSOCIATION for HUMAN RESOURCES

